



**Weiti Boating Club (INC)**  
PO Box 207 Whangaparaoa



# Weiti Boating Club - Short Handed Programme

## 2020 – 2021

**Organising Authority: Weiti Boating Club**

Fairhaven Walk Whangaparaoa.

P: (09) 424 5905 W: weiti.co.nz

### COVID-19 NOTICE

**All boats must comply with Covid-19 requirements issued by NZ Government COVID-19, Public Health Authorities and Yachting NZ Guidelines. Covid-19 “Notice to Competitors and Race Management volunteers” will be posted on the WBC website**

## Notice of Race and Sailing Instructions

### 1.0 Rules

- 1.1 The series will be governed by the ‘rules’ as defined in *The Racing Rules of Sailing*. 2017-2020 in 2020 and 2021-2024 edition from 1 Jan 2021
- 1.2 For Keel Yachts the YNZ Safety Regulations Part II, Category 4 shall apply.
- 1.3 For Trailer Yachts the YNZ Safety Regulations Part V, Category A shall apply.  
All yachts must be equipped with a VHF radio capable of transmitting and receiving on all channels.  
A listening watch must be maintained in the cockpit **on VHF Ch77 while underway either with a Handheld or Cockpit fitted VHF radio.**
- 1.4 **For all races sailed Single Handed the following additional safety regulations apply:**
  - Skippers must wear an approved life jacket while racing.
  - Skippers must carry on their person a means of communication to self-initiate a rescue in the event that they fall overboard.
- 1.5 Boats may fly extras (Extras are defined as sails not usually used to advantage to windward).
- 1.6 The Short Handed Programme consists of two mini-series, being the Single-Handed mini-series and the Male / Female mini-series.
- 1.7 Races 2 and 4 are designated as the single-handed races and as such shall have a crew of no more than the skipper.
- 1.8 Races 1 and 3 are designated as the Male / Female races and as such shall have a crew of no more than one male and one female. These races may be sailed single handed.
- 1.9 RRS 52 will be changed as follows: Autohelms and electric winches are allowed.
- 1.10 RRS Appendix T will apply (Arbitration).



**2.0 Eligibility & Entry**

- 2.1 Entries will be accepted from Keel Yachts and Trailer Yachts registered with YNZ and whose owners/skippers are financial members of a yacht club affiliated to YNZ.
- 2.2 WBC reserve the right to accept or refuse any entry.
- 2.3 Entries must be made to the Weiti Boating Club using the online entry form on the Club’s website, with payment of the designated entry fee. **Entrants must provide a mobile phone number that they can be contacted on while racing.**
- 2.4 Only series entrants will be eligible for series points. Entries for individual races must be received and fees paid by 1200 hrs on the Saturday preceding a scheduled race day. Late entries for individual races may also be accepted at the discretion of the Race Committee or Race Officer.

**Entry Fees: \$20 for each Mini-Series or \$15 per race**

**3.0 Notices to Competitors**

- 3.1 Notices may be posted on one or more of the following:
  - 3.1.1 The Weiti Boating Club Website [www.weiti.co.nz](http://www.weiti.co.nz)
  - 3.1.2 Advised by Txt to the mobile number given in 2.3 above.
  - 3.1.3 Advised by email to the email address loaded with the online entry form.
  - 3.1.4 On the official notice boards located at the WBC clubrooms.

**4.0 Changes to Sailing Instructions**

- 4.1 Any change to the sailing Instructions will be posted at least 2 hours prior to the scheduled start of the day’s racing, on the day it will take effect.
- 4.2 Notices of cancellation will endeavor to be sent by email and /or Txt to the email address /mobile number given in 2.3 above, at least 1 hour prior to the scheduled start of the days racing.

**5.0 Schedule of Races**

Entry fee: \$20 / Mini series				
Race	Day	Date	Mini series	Trophy
Race 1	Su	22-11-2020	M / F	Contessa Cup
Race 2	Su	21-2-2021	S-Handed	Ann Jacobsen Memorial Cup
Race 3	Su	21-3-2021	M / F	Contessa Cup
Race 4	Su	18-4-2021	S-Handed	McGuire Family Trophy

Warning signal		High tide		Low tide	
Time	Ht	Time	Ht	Time	Ht
1055	1356	2.9	0729	0.8	
1225	1508	2.5	0858	1.1	
1055	1341	2.6	0726	1.1	
0855	1128	2.6	0508	1.0	

**6.0 Class Flag**

- 6.1 All boats will race in one class and fly a White class flag.

**7.0 Racing Area**

- 7.1 The races will be held on the waters of the Hauraki Gulf and Waitemata Harbour.



## 8.0 Race control

- 8.1 The Race Committee shall either provide a start vessel or designate one boat participating in the race as the **Race Start Vessel** and notify all entrants accordingly.
- 8.2 The Race Committee shall notify all competitors (refer 3.0 above), contact details including a mobile number nominated by the Race Committee prior to the start. Race control will move from the **Race Start Vessel** to the nominated **Race Committee contact** following completion of the start sequence.
- 8.3 The Race Committee may provide a **Race Finish Vessel**. If so, all entrants will be notified accordingly that the finish procedure will be as per Addendum A 3.0 & 4.0.

## 9.0 Radio Communications

- 9.1 The race channel to be used is VHF Radio Ch 77. All boats must maintain a constant radio watch on this channel.
- 9.2 For all WBC controlled races, the call sign for the Race Start Vessel and the Committee Boat is "WEITI Race Control".

## 10.0 Course to be sailed

- 10.1 The Courses are detailed in Addendum B.
- 10.2 No later than the warning signal, the Race Start Vessel will display the course number on a board with black digits on a white background.

## 11.0 The Start

- 11.1 The start line will be in the vicinity of Arkles Bay. The starting line will be between a staff displaying an orange flag on the Race Start Vessel at the starboard end and an orange conical buoy at the port end. This is detailed in addendum A.
- 11.2 A boat that does not start within 10 minutes after her starting signal will be scored DNS (Did Not Start). This changes RRS A4 and A5.
- 11.3 If any boat or part of a boat, or crew, is on the course side of the starting line at the starting signal and is identified, the Race Start Vessel shall attempt to broadcast her number on VHF Radio Ch 77. Failure to make a broadcast or to time it accurately will not be grounds for redress. This changes RRS 62.1 (a). (Redress)

## 12.0 The Finish

- 12.1 The finishing line will be as described in Addendum A.

## 13.0 Time limits

- 13.1 The time limit for all races in this event is 1900 hours on the day of the race.

## 14.0 Protests and requests for Redress

- 14.1 For protests where only a rule of Part 2 (When boats Meet) is alleged to have been broken, an arbitration hearing will be offered prior to any hearing.



**Weiti Boating Club (INC)**  
PO Box 207 Whangaparaoa



- 14.2 A protest shall be lodged in the appropriate format (forms are available from the Club House or YNZ Website) within the protest time limit and delivered to a member of the Sailing Committee.
- 14.3 The time limit for lodging a protest is 120 minutes after the last boat has finished.

### 15.0 Handicapping

- 15.1 Handicapping will be in accordance with the WBC Handicapping system.
- 15.2 Finishing times should be sent by TXT to the number advised.

### 16.0 Scoring

- 16.1 There will be no discards for this series. All races will count for series scoring. This overrides RRS Appendix A2.1"
- 16.2 RRS Appendix A9 will be used.

### 17.0 Safety Regulations

- 17.1 **A boat that retires from a race shall notify the Race Committee either via VHF Ch.77, Phone or Txt (acknowledgement is required) to the mobile number nominated, (refer 8.2 above) as soon as practicable after they have retired. They shall also inform other competitors on VHF Ch 77.**
- 17.2 Skippers are required to maintain a written list on board of all crew for the day (including the skipper), their next-of-kin or contact person, and a contact phone number. All crew must be made aware of the location of this list before departing their marina / mooring.
- 17.3 All entrants are required to register with the Race Committee Vessel via VHF Radio Ch 77, before the warning signal advising the boat name and the number of people on board.
- 17.4 All skippers must take responsibility to ensure at all times their boat complies with the relative safety regulations in Sailing Instructions Rule 1.0 above.
- 17.5 Boats may be inspected for compliance with the safety regulations at the discretion of the Race Committee.
- 17.6 The Race Committee **recommends that ALL competitors wear a Personal Floatation Device (Lifejacket)** that meet New Zealand Standard 5823:2005 (inflatable type 401 150N) with a crotch strap while underway

### 18.0 Prizes

- 18.1 Day race results will be advised by email as soon as practicable after each race.
- 18.2 Series results will be advised as soon as practicable following the completion of Race 4.

### 19.0 Insurance

- 19.1 Each participating boat shall be insured with valid Third-Party insurance - liability insurance with a minimum cover of \$5M per incident or equivalent.



**Weiti Boating Club (INC)**  
PO Box 207 Whangaparaoa



## 20.0 Disclaimer of Liability

- 20.1 Competitors participate in the regatta entirely at their own risk. See RRS 4, Decision to Race. The responsibility for a boat's decision to participate in a race or to continue racing is hers alone.
- 20.2 The Organising Authority will not accept any liability for material damage or personal injury or death sustained in conjunction with, prior to, during, or after the regatta.

For further details contact the administrative office at:

**Weiti Boating Club**

P: 09 424 5905

E: [weiti@xtra.co.nz](mailto:weiti@xtra.co.nz)

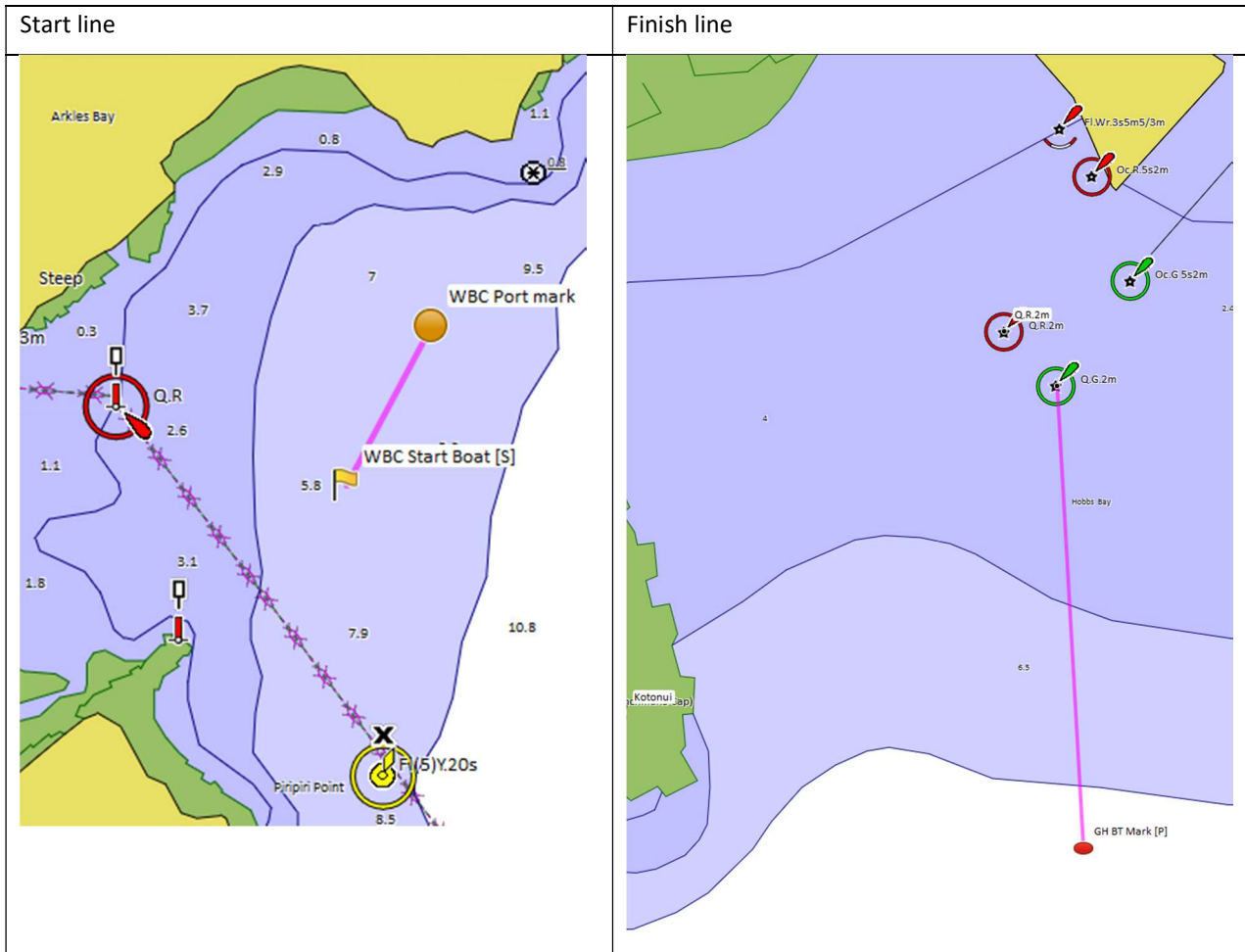
W: [weiti.co.nz](http://weiti.co.nz)



**Weiti Boating Club (INC)**  
PO Box 207 Whangaparaoa



**Addendum A: SHS START / FINISH LINES**



1. All courses will start in the vicinity of Arkles Bay.
2. All courses will finish in the vicinity of Kotanui Is (Frenchmans Cap) in a westerly direction between a virtual mark (36 37.950 S 174 47.170 E, and a line running north to the outer green channel marker. An orange marker buoy may be laid at this position to form the port end of the finish line.
3. Boats are to take their own finishing time using GPS time and communicate this as defined in 15.2 above as soon as practicable.
4. In the event that there is a Race Finish Vessel on station, the finishing line would be between the Race Finish Vessel at the Starboard end and the above described mark at the Port end.
5. Finish times may also be taken from the Race Finish Vessel and/or a WBC Race Management / Sailing Committee member or their representative on the Hammerhead and if so taken, will take precedence over competitor recorded times.



**Weiti Boating Club (INC)**  
PO Box 207 Whangaparaoa



**Addendum B: Courses & marks**

Course #	Course details	Nms	Notes
1	Start – Haystack (S) – McKenzie Buoy (S) –GH Buoy (P) - Finish	26.2	
2	Start – McKenzie Buoy (P) – Haystack (P) – GH Buoy (S)- Finish	26.4	
3	Start – McKenzie Buoy (P) – East Cardinal (P) – GH Buoy (S) - Finish	28.1	
4	Start – East Cardinal (S)- McKenzie Buoy (S) - GH Buoy (P) - Finish	27.1	
5	Start – Rangitoto (P) - GH Buoy(S) -Finish	29.1	
6	Start – Rangitoto (S) - GH Buoy(P) - Finish	29.2	
7	Start – Flat Rock (P) – Motuora (P) – GH Buoy(S) - Finish	33.9	
8	Start – Motuora (S) – Flat Rock (S) – GH Buoy(S) - Finish	33.9	
9	Start – Navy Buoy (S) – GH Buoy (S) - Finish	7.5	
10	Start – Marine-Sth (P) - GH Buoy (P) - Finish	6.9	
11	Start – Navy Buoy (S) – Haystack (S) – GH Buoy(S) - Finish	19.7	
12	Start – Haystack (P) – Navy Buoy (P) – GH Buoy(S) - Finish	20.7	
13	Start – McKenzie Buoy (P) – Navy Buoy (P) - GH Buoy(S) - Finish	23.2	
14	Start – Navy Buoy (S) – McKenzie Buoy (S) - GH Buoy(P) - Finish	22.0	
15	Start – Torbay Buoy (P) – Haystack (P) – GH Buoy(S) - Finish	21.9	
16	Start – Haystack (S) – Torbay Buoy (S) - GH Buoy(P) - Finish	21.8	
17	Start – GH Buoy (S) – Marine-Nth (P) – Torbay Buoy (P) – GH Buoy (P) – Finish	11.6	
18	Start – Marine-Nth (P) - Marine-Sth (P) - GH Buoy (P) - Finish	7.8	
19	Start – Torbay Buoy (P) – Navy Buoy (P) – GH Buoy(S) - Finish	15.2	
20	Start -Navy Buoy (S) – Torbay Buoy (S) – GH Buoy (P) - Finish	14.1	
21	Start – Rakino Is (P) –Otata Is (P) - East Cardinal(P) – GH Buoy (S) - Finish	27.1	
22	Start – Rakino Is (P) – D’Urville Rocks (P) - East Cardinal(P) – GH Buoy (S) - Finish	34.4	
23	Start – GH Buoy (S) – Marine-Nth (P) – McKenzie Buoy (P) - GH Buoy (P) - Finish	20.3	
24	Start – GH Buoy (S) – Marine-Sth (P) -Haystack (P) – Marine-Sth (S) – GH Buoy (P) - Finish	24.8	

Mark locations are as per table below:

Mark	Lat.	Long.	Notes
Start (approximate point for reference)	36 37.950S	174 47.170 E	
GH Buoy (Gulf Harbour Yellow Buoy)	36 39.130S	174 48.030 E	
McKenzie Buoy	36 46.721 S	174 49.115 E	
East Cardinal Buoy (approx. 1 mile east of Tiritiri)	36 36.497 S	174 55.340 E	
Torbay Buoy (approx. 1.5 miles east of Torbay)	36 42.500 S	174 47.300 E	
Navy Buoy (Whangaparaoa Outer / Eastern buoy)	36 36.922S	174 50.654 E	
Haystack (Orarapa Island)	36 41.891 S	174 57.266 E	
Marine-Nth (Northern Long Bay Marine Reserve marker) Pipiriri Point	36 39.761S	174 45.282E	
Marine-Mid (Middle Long Bay Marine Reserve marker)	36 40.451S	174 45.900E	
Marine-Sth (Southern Long Bay Marine Reserve marker)	36 41.122 S	174 46.488 E	