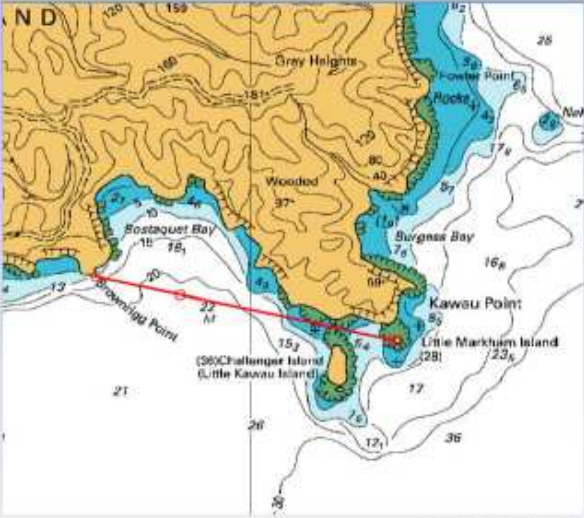
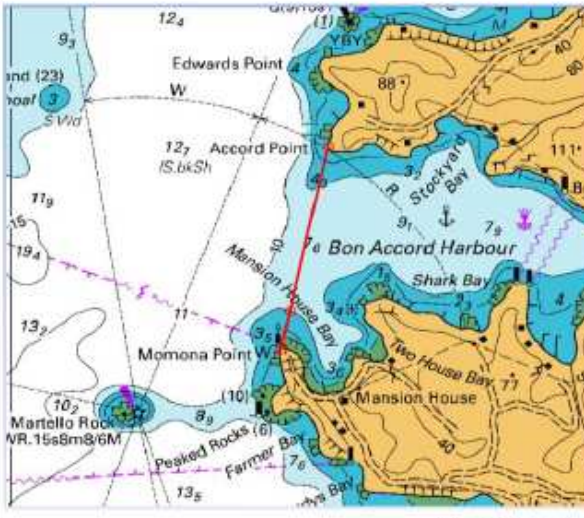
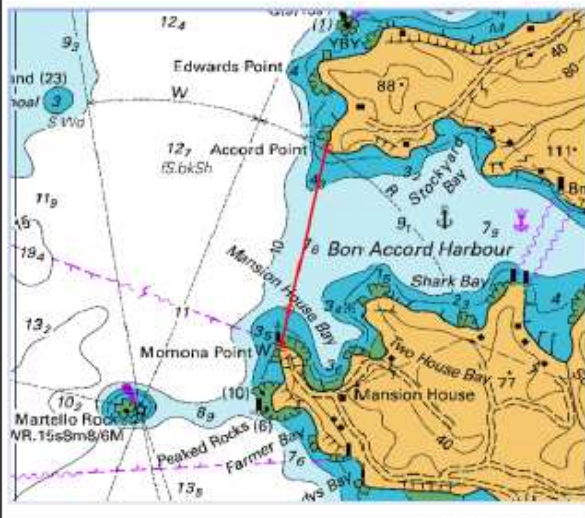


**Weiti Boating Club: List of courses**

<b>Course 1</b>	Kawau – Bostaquet Bay	
Distance	13.2 miles	
Course	Navy Buoy Port, Finish 1	
Time Limit	6 hours	
<b>Finish 1</b>	Bostaquet	
Transit	Brownrigg Point 36° 26.827 S      174° 51.306 E	
	Little Markham Island 36° 27.071 S      174° 52.616 E	
Bearings	83°, 263°	
Waypoint	36° 26.896 S      174° 51.672 E	
		
Chart Ref: NZ5227		

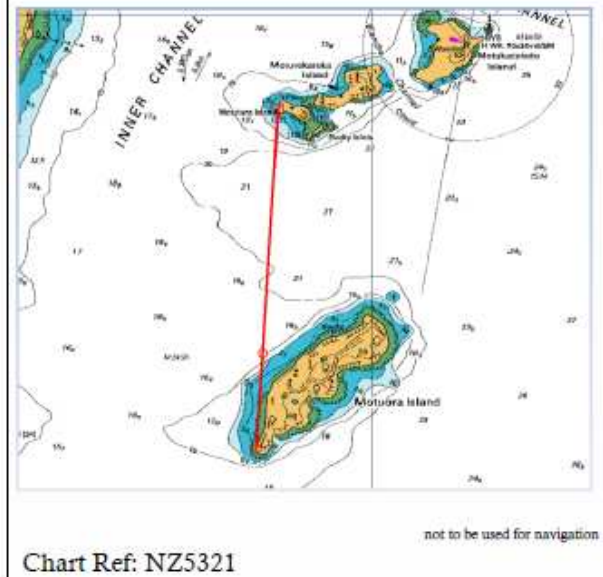
<b>Course 2</b>	Kawau via Motuora - Bon Accord	
Distance	16.2 miles	
Course	Navy Buoy Port, Motuora Is. Stbd, Motutara Is. Stbd, Finish 2	
Time Limit	6 hours	
<b>Finish 2</b>	Bon Accord	
Transit	Accord Point 36° 25.071 S      174° 49.107 E	
	Momona Point 36° 25.699 S      174° 48.945 E	
Bearings	172°, 352°	
Waypoint	36° 25.575 S      174° 48.976 E	
		
Chart Ref: NZ5227		

<b>Course 3</b>	Kawau – Mansion House Bay	
Distance	15.0 miles	
Course	Navy Buoy Port, Motuketekete Is. Port, Martello Rock Port, Finish 2	
Time Limit	6 hours	
<b>Finish 2</b>	Bon Accord	
Transit	Accord Point 36° 25.071 S      174° 49.107 E	
	Momona Point 36° 25.699 S      174° 48.945 E	
Bearings	172°, 352°	
Waypoint	36° 25.575 S      174° 48.976 E	
		
Chart Ref: NZ5227		

**Weiti Boating Club: List of courses**

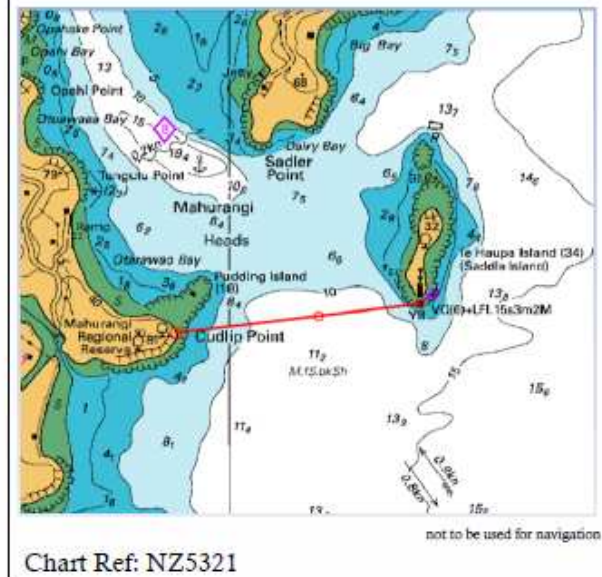
<b>Course 4</b>	Motuora Is.
Distance	11.3 miles
Course	Navy Buoy Port, Motuora Is. Stbd, Finish 4
Time Limit	6 hours

<b>Finish 4</b>	Motuora
Transit	SW end Motuora Island 36° 30.746 S      174° 47.133 E W end Motutara Island 36° 28.572 S      174° 47.329 E
Bearings	164°, 344°
Waypoint	36° 30.141 S      174° 47.186 E



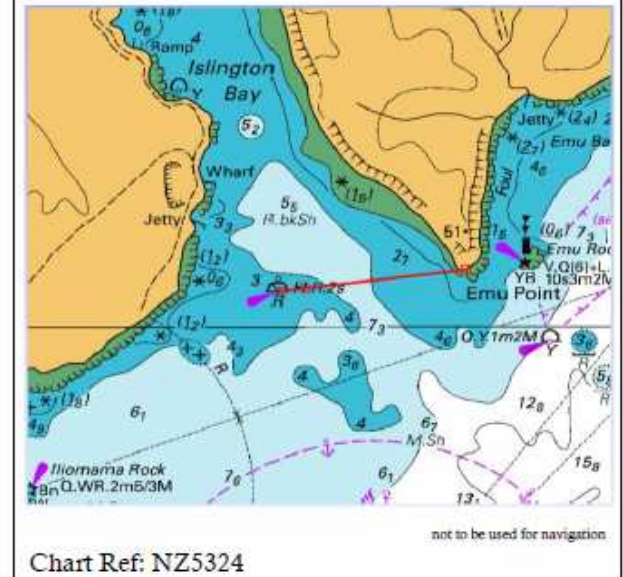
<b>Course 5</b>	Mahurangi
Distance	11.6 miles
Course	Navy Buoy Port, Te Haupa Is. (Saddle Is.) Stbd, Finish 5
Time Limit	6 hours

<b>Finish 5</b>	Mahurangi
Transit	Cudlip Point 36° 30.975 S      174° 43.734 E Te Haupa Island Light 36° 30.900 S      174° 44.800 E
Bearings	65°, 245°
Waypoint	36° 30.929 S      174° 44.365 E



<b>Course 6</b>	Islington Bay via Rangitoto
Distance	14.5 miles
Course	Rangitoto Port, Iliomona Rock Port, Finish 6
Time Limit	6 hours

<b>Finish 6</b>	Islington
Transit	Islington Bay Light R Fl.R.2s 36° 47.882 S      174° 54.055 E Emu Point 36° 47.793 S      174° 54.706 E
Bearings	63°, 243°
Waypoint	36° 47.870 S      174° 54.128 E



**Weiti Boating Club: List of courses**

<b>Course 7</b>	Motutapu Is – Administration Bay	
Distance	8.6 miles	
Course	Direct, Finish 7	
Time Limit	6 hours	
<b>Finish 7</b>	Administration	
Transit	Rocky Islet 36° 44.688 S      174° 53.871 E	
	Billy Goat Point 36° 43.822 S      174° 54.884 E	
Bearings	24°, 204°	
Waypoint	36° 44.306 S      174° 54.328 E	

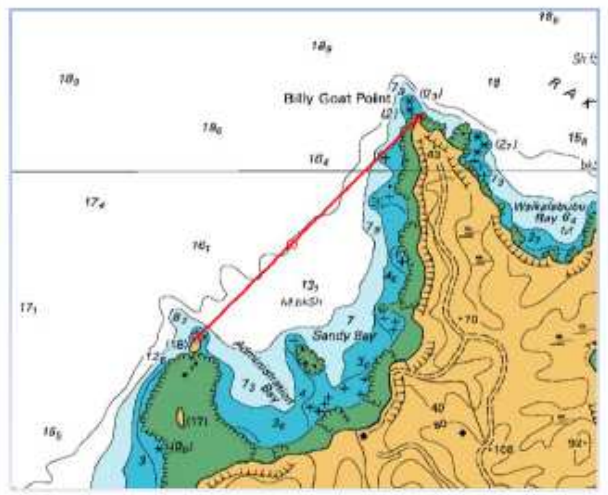


Chart Ref: NZ5321

<b>Course 8</b>	Rakino Island – Woody Bay	
Distance	8.8 miles	
Course	Direct, Finish 8	
Time Limit	6 hours	
<b>Finish 8</b>	Rakino	
Transit	Billy Goat Point 36° 43.822 S      174° 54.884 E	
	Three Sisters 36° 43.353 S      174° 56.304 E	
Bearings	51°, 231°	
Waypoint	36° 43.452 S      174° 56.013 E	

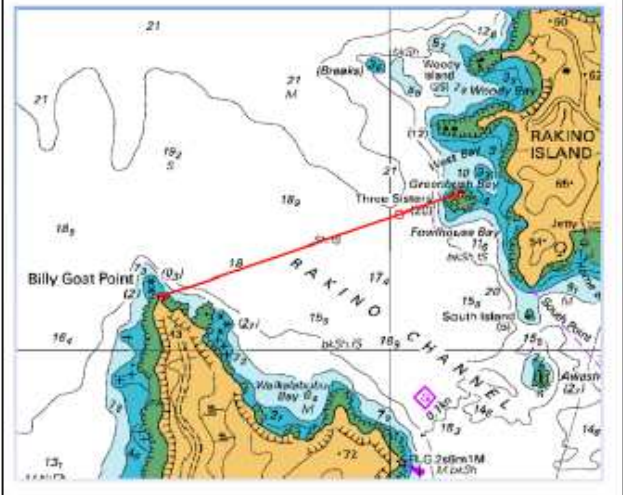


Chart Ref: NZ5324

<b>Course 9</b>	Waiheke – Oneroa	
Distance	14.1 miles	
Course	Rakino Port, Finish 9	
Time Limit	6 hours	
<b>Finish 9</b>	Oneroa	
Transit	Hakaimango Point 36° 46.066 S      175° 00.860 E	
	Port Beacon 36° 46.372 S      175° 01.611 E	
Bearings	97°, 277°	
Waypoint	36° 46.130 S      175° 01.008 E	

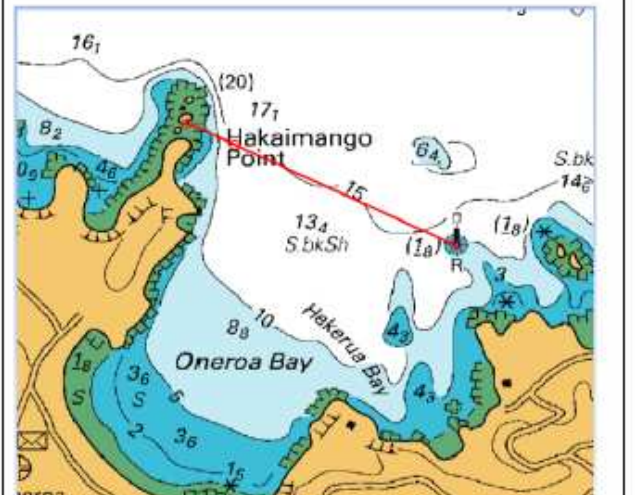
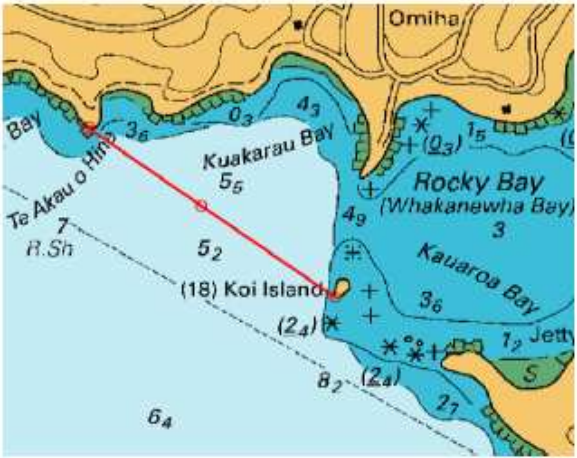


Chart Ref: NZ5324

## Weiti Boating Club: List of courses

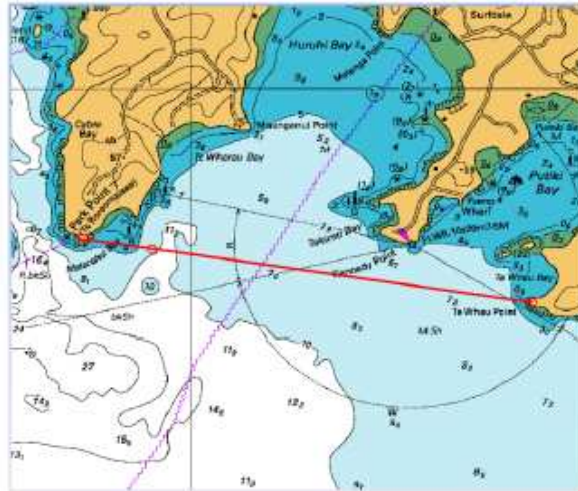
<b>Course 10</b> Waiheke – Rocky Bay	
Distance	18.7 miles
Course	Rakino Stbd, Finish 10
Time Limit	6 hours
<b>Finish 10</b> Rocky Bay	
Transit	Te Akau o Hine 36° 49.245 S      175° 02.685 E
	Koi Island 36° 49.622 S      175° 03.317 E
Bearings	107°, 287°
Waypoint	36° 49.418 S      175° 02.975 E

not to be used for navigation

Chart Ref: NZ5324

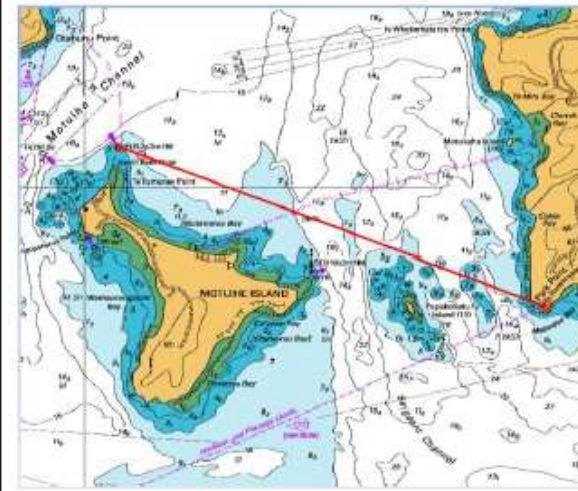
<b>Course 11</b> Waiheke – Putiki Bay(Huruhi Bay)	
Distance	15.2 miles
Course	Rakino Port, Finish 11
Time Limit	6 hours
<b>Finish 11</b> Hururi	
Transit	Park Point 36° 48.743 S      174° 59.364 E
	Te Whau Point 36° 49.065 S      175° 01.937 E
Bearings	79°, 259°
Waypoint	36° 48.787 S      174° 59.758 E

not to be used for navigation

Chart Ref: NZ5324

<b>Course 12</b> Motuihe Is	
Distance	13.2 miles
Course	Motutapu Is. Stbd, Finish 12
Time Limit	6 hours
<b>Finish 12</b> Motuhi	
Transit	Park Point 36° 48.743 S      174° 59.364 E
	North Reef Light Fl.R.3s 36° 47.700 S      174° 56.200 E
Bearings	92°, 272°
Waypoint	36° 48.784 S      174° 59.393 E

not to be used for navigation

Chart Ref: NZ5324

## Weiti Boating Club: List of courses

<b>Course 13</b> Waiheke - Man o War Bay	
Distance	24.5 miles
Course	Rakino Is. Port, Waiheke Is. Stbd, Finish 13
Time Limit	8 hours
<b>Finish 13</b> Man O War	
Transit	Point E of Waiti Bay 036°46.703 S    175°11.569 E Pakatoa W Light 2FR(ver)2M 036°47.550 S    175°11.350 E
Bearings	173°, 353°
Waypoint	036°47.013 S    175°11.478 E

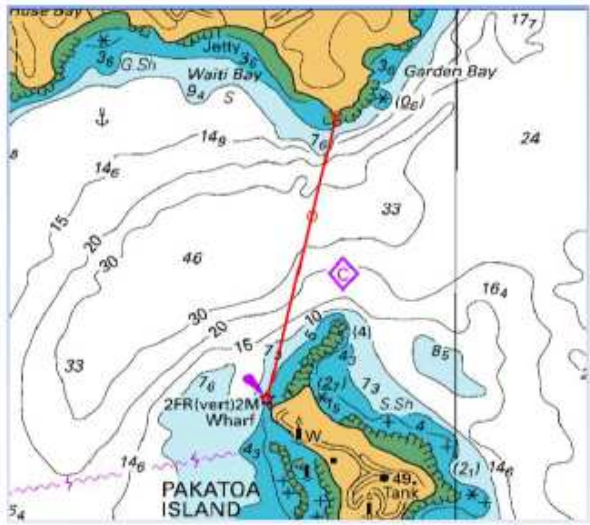


Chart Ref: NZ5324

<b>Course 14</b> Te Kouma	
Distance	32.8 miles
Course	Waiheke Is. Stbd, Finish 14
Time Limit	8 hours
<b>Finish 14</b> Te Kouma	
Transit	Tokaanu Reef Marker 036°50.026 S    175°24.926 E Wekarua Island W end 036°50.449 S    175°25.008 E
Bearings	147°, 327°
Waypoint	036°50.229 S    175°24.926 E

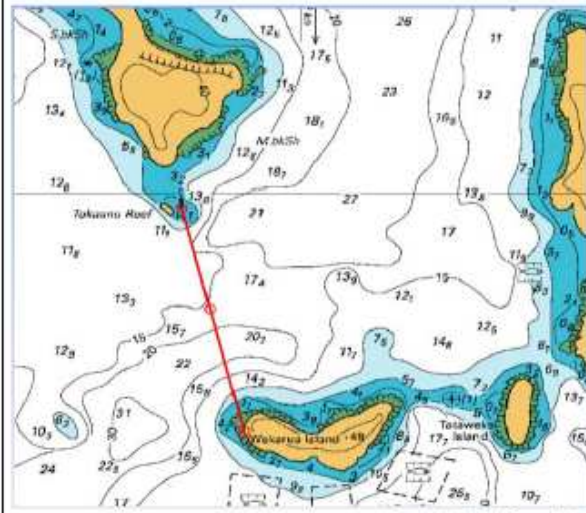


Chart Ref: NZ5328